



---

# Service Manual

## Sweeper/Gutter Brush

---

44" (S/N 984600101 & Above)

54" (S/N 439500101 - 439500891)

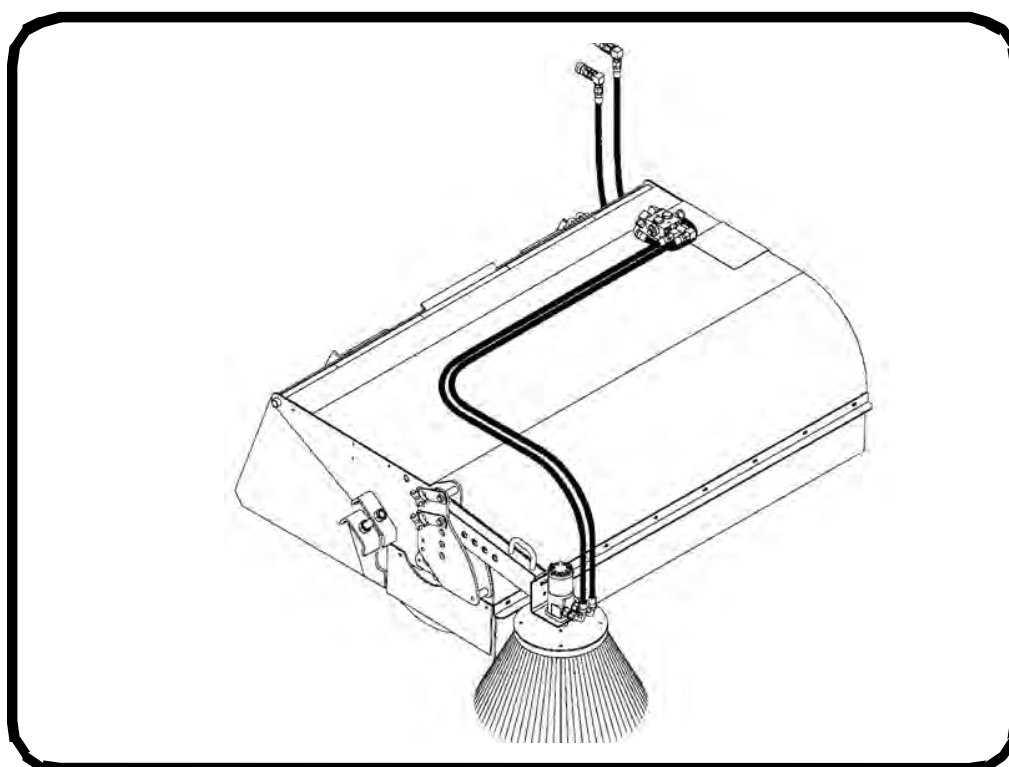
54" (S/N 782699191 & Above)

60" (S/N 434700101 - 434706595)

60" (S/N 714400101 & Above)

72" (S/N 435400101 - 435401434)

72" (S/N 783700101 & Above)



Dealer Copy -- Not for Resale





# MAINTENANCE SAFETY



## WARNING

Instructions are necessary before operating or servicing machine. Read and understand the Operation & Maintenance Manual, Operator's Handbook and signs (decals) on machine. Follow warnings and instructions in the manuals when making repairs, adjustments or servicing. Check for correct function after adjustments, repairs or service. Untrained operators and failure to follow instructions can cause injury or death.

W-2003-0807











**Safety Alert Symbol:** This symbol with a warning statement, means: "Warning, be alert! Your safety is involved!" Carefully read the message that follows.

**CORRECT**



P-90216

-  **Never service attachments / implements without instructions. See Operation & Maintenance Manual and Attachment / Implement Service Manual.**
-  **Cleaning and maintenance are required daily.**
-  **Never service or adjust attachment / implement with the engine running unless instructed to do so in manual.**
-  **Always lower the attachment / implement to the ground before lubricating or servicing.**
-  **Avoid contact with leaking hydraulic fluid or diesel fuel under pressure. It can penetrate skin or eyes.**
-  **Stop, cool and clean engine of flammable materials before checking fluids.**
-  **Keep body, loose objects and clothing away from moving parts, electrical contacts, hot parts and exhaust.**
-  **Safety glasses are needed for eye protection from electrical arcs, battery acid, compressed springs, fluids under pressure and flying debris or when tools are used. Use eye protection approved for type of welding.**

Dealer Copy -- Not for Resale

MSW30-0409



**Thanks very much for your reading,  
Want to get more information,  
Please click here, Then get the complete  
manual**

**JustClickHere** 

**NOTE:**

**If there is no response to click on the link above,  
please download the PDF document first, and then  
click on it.**

**Have any questions please write to me:  
[admin@servicemanualperfect.com](mailto:admin@servicemanualperfect.com)**

## CONTENTS

|                              |          |
|------------------------------|----------|
| FOREWORD .....               | 1-05     |
| SAFETY AND MAINTENANCE ..... | 10-01    |
| HYDRAULIC SYSTEM .....       | 20-01    |
| MAINFRAME .....              | 30-01    |
| SPECIFICATIONS .....         | SPEC-01  |
| ALPHABETICAL INDEX .....     | INDEX-01 |



## FOREWORD

|  |      |
|--|------|
| SERIAL NUMBER LOCATION .....   | 1-7  |
| IDENTIFICATION .....   | 1-8  |
| (S/N 782600101 & Above), (S/N 714400101 & Above) And (S/N 783700101 & Above)<br>.....        | 1-8  |
| (S/N 439500101-439500891), (S/N 434700101-434706595) And (S/N 435400101-<br>435401434) ..... | 1-9  |
| (S/N 984600101 & ABOVE) .....  | 1-10 |





SERIAL NUMBER LOCATION

Figure 1-1

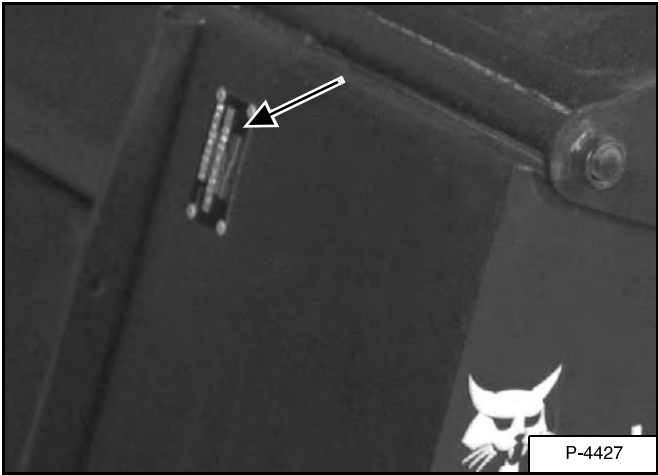


Figure 1-2

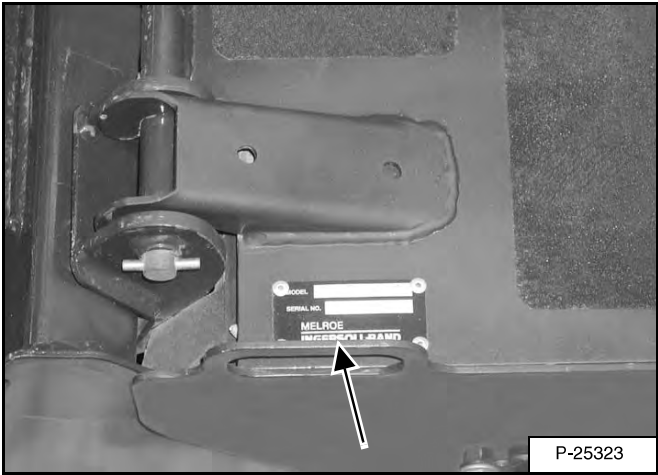
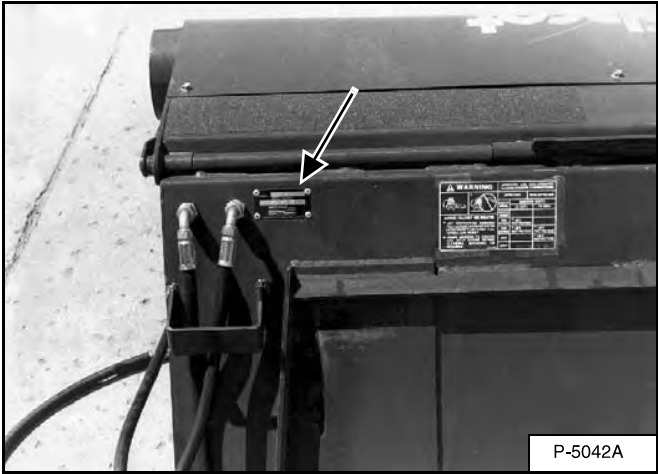


Figure 1-3

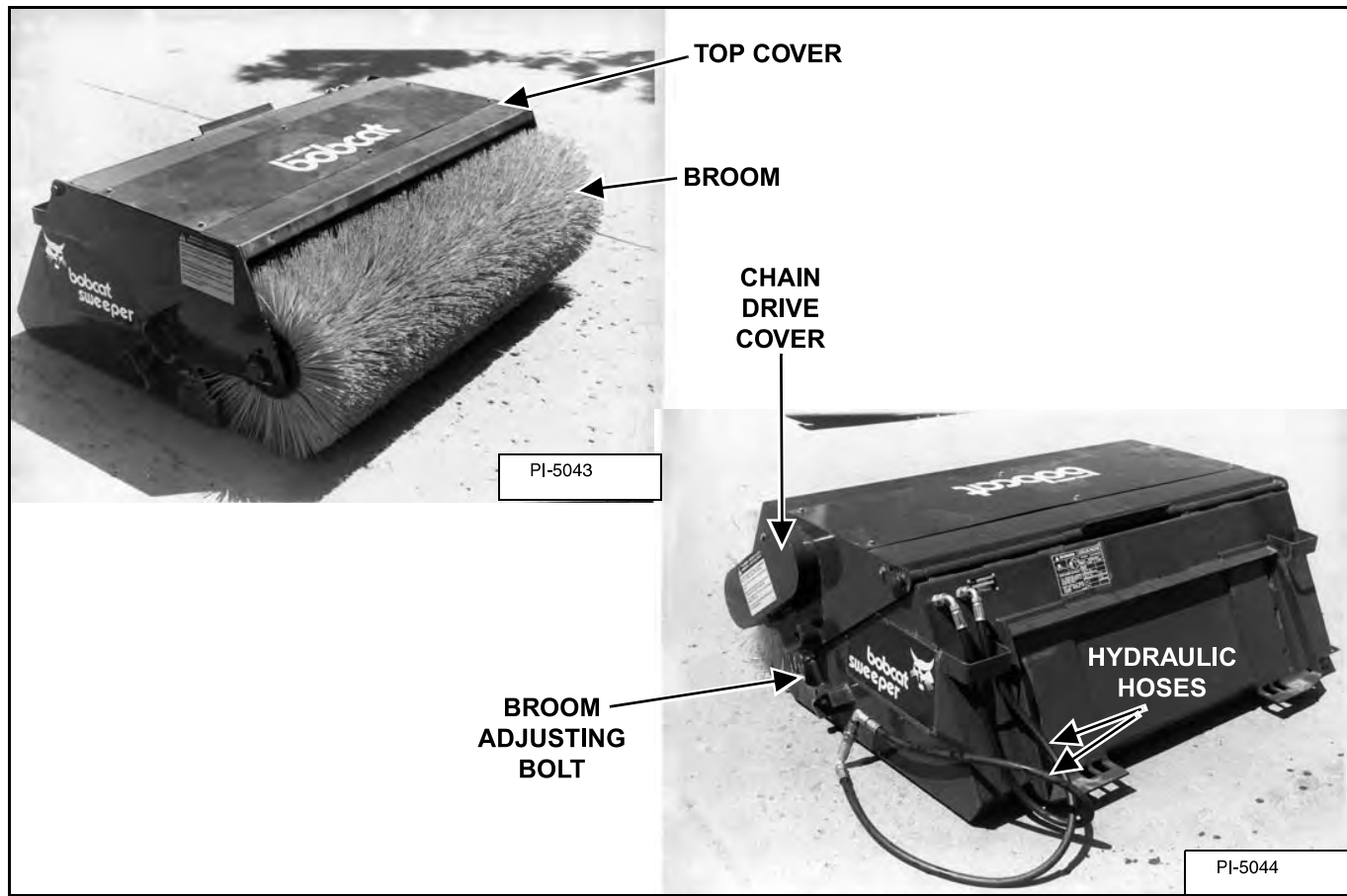


It is important to make the correct reference to the serial number of the Bobcat Sweeper when making repairs or ordering parts. Early or later models (identification made by serial number) may use different parts, or it may be necessary to use different procedures in doing a specific operation. The attachment serial number is on the right rear side of the attachment [Figure 1-1] and [Figure 1-2] (later models) or near the hydraulic hoses [Figure 1-3] (earlier models).

Dealer Copy -- Not for Resale

IDENTIFICATION

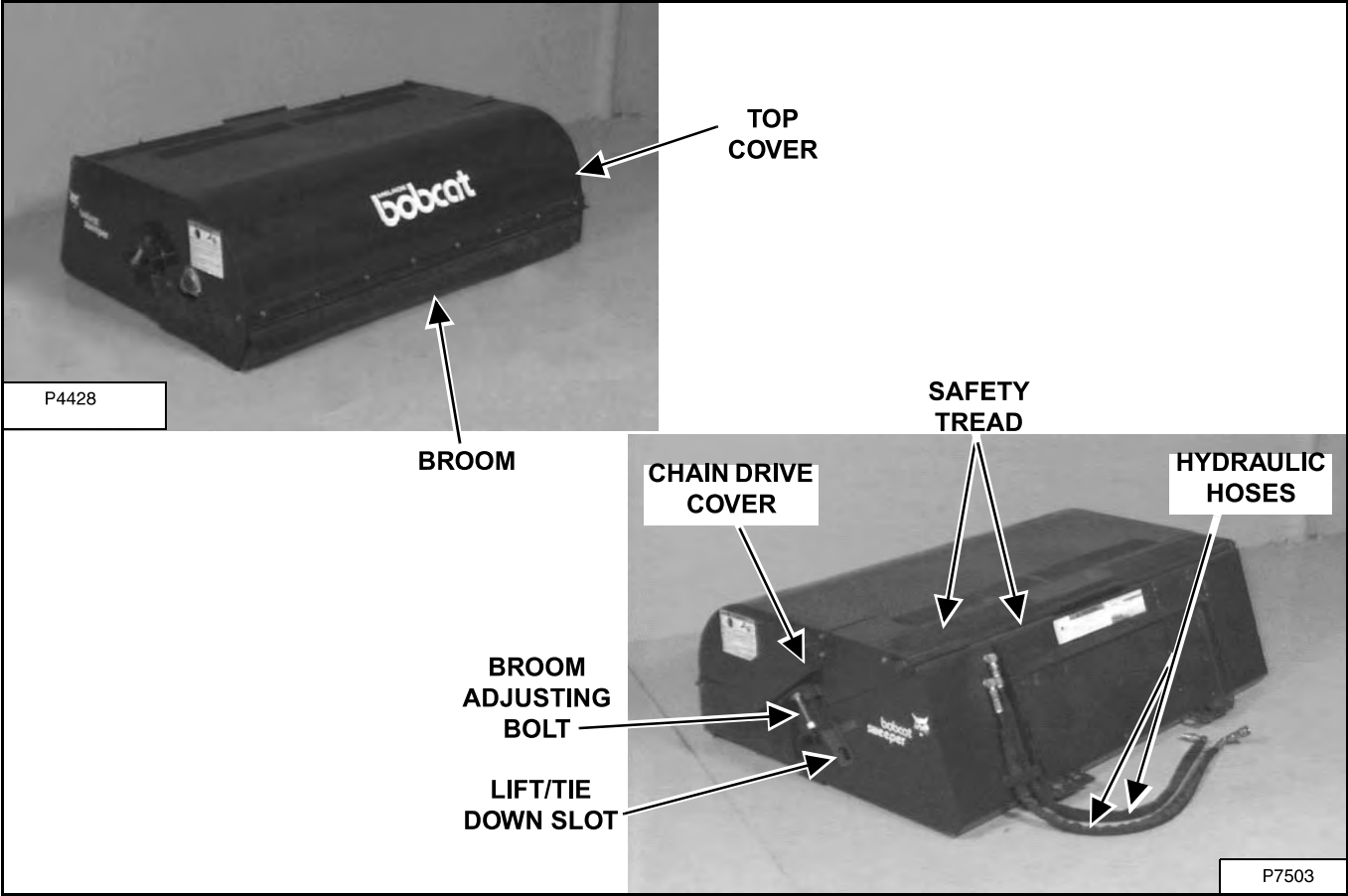
(S/N 782600101 & Above), (S/N 714400101 & Above) And (S/N 783700101 & Above)



Dealer Copy -- Not for Resale

IDENTIFICATION (CONT'D)

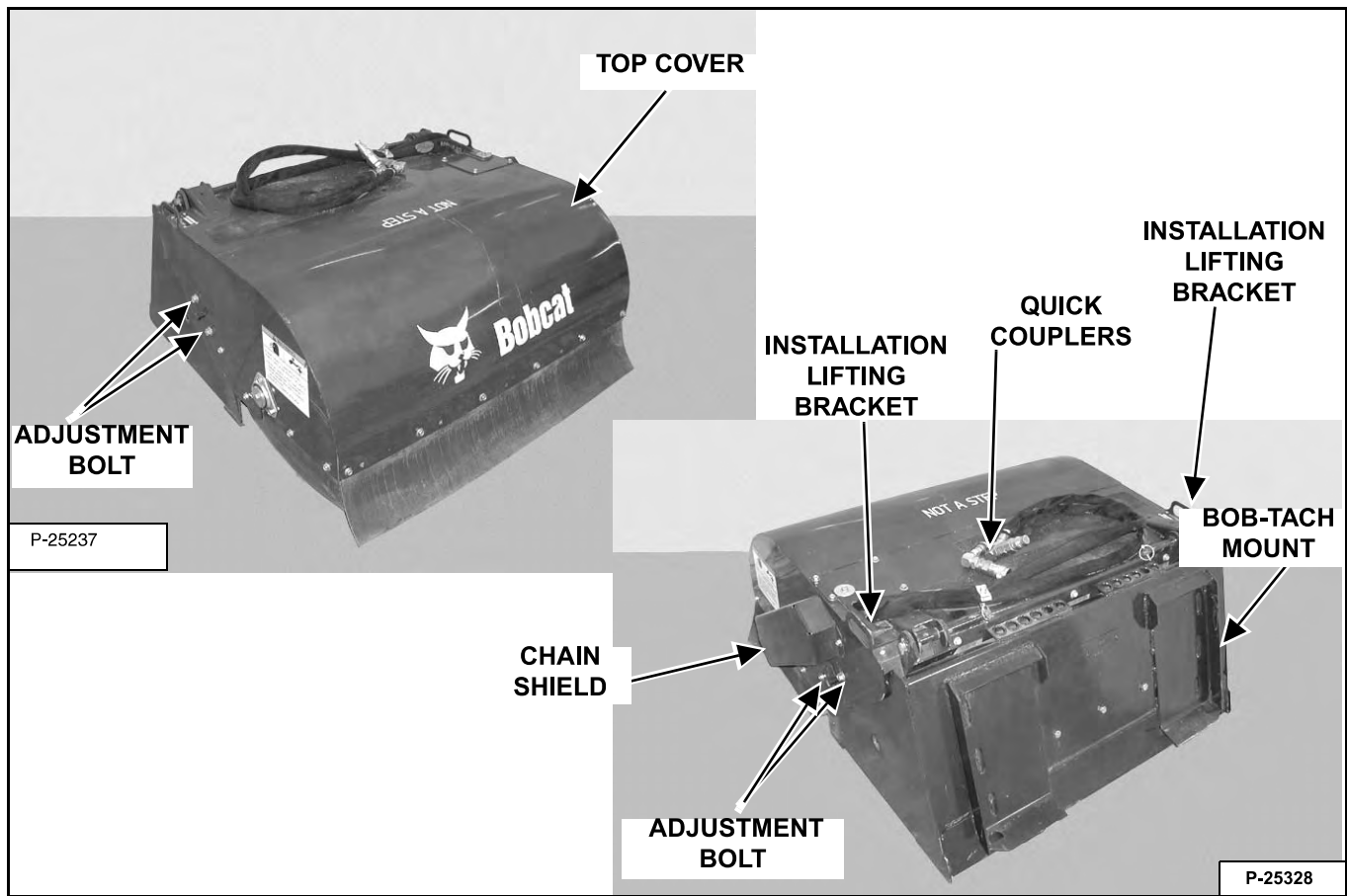
(S/N 439500101-439500891), (S/N 434700101-434706595) And (S/N 435400101-435401434)



Dealer Copy -- Not for Resale

IDENTIFICATION (CONT'D)

(S/N 984600101 & ABOVE)



Dealer Copy -- Not for Resale

## SAFETY AND MAINTENANCE

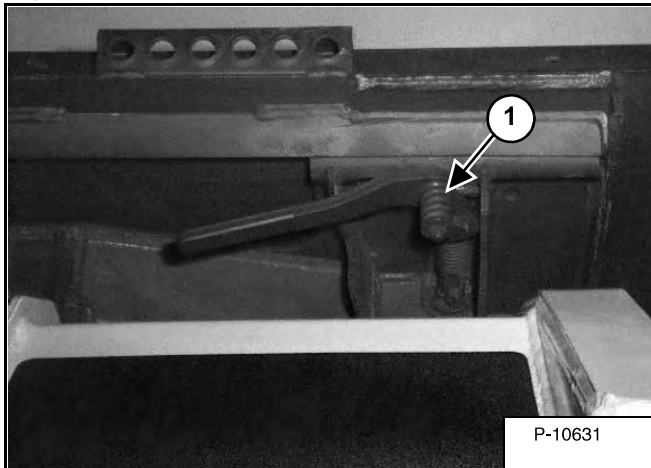
|  |         |
|--|---------|
| INSPECTION .....   | 10-10-1 |
| Hand Lever Bob-Tach Inspection .....   | 10-10-1 |
| Power Bob-Tach Inspection .....  | 10-10-2 |
| Sweeper Inspection .....   | 10-10-3 |
| ADJUSTMENT OF STOP BOLTS .....   | 10-20-1 |
| (S/N 439500101-439500891), (S/N 434700101- 434706595) And (435400101-435401434)<br>..... | 10-20-1 |
| (S/N 984600101 & Above) .....  | 10-20-2 |
| CUTTING EDGE WEAR .....  | 10-30-1 |
| GUTTER BRUSH .....   | 10-40-1 |
| Adjusting The Brush .....  | 10-40-1 |
| TROUBLESHOOTING .....  | 10-50-1 |
| Chart .....  | 10-50-1 |



## INSPECTION

### Hand Lever Bob-Tach Inspection

Figure 10-10-1



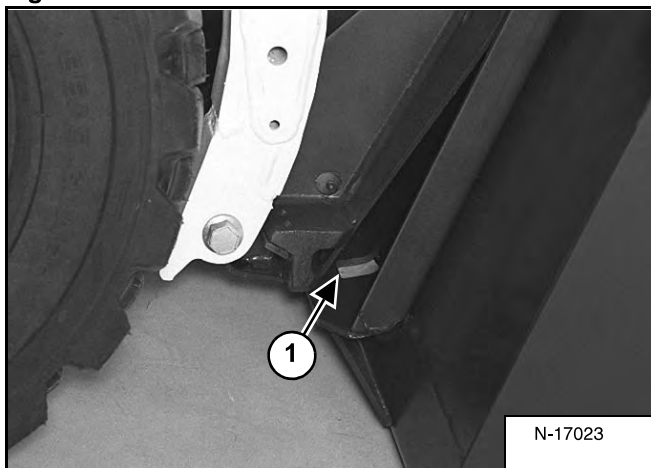
Move the Bob-Tach levers to engage the wedges [Figure 10-10-1]. The levers and wedges must move freely.

## ! WARNING

Bob-Tach wedges must extend through the holes in attachment. Lever(s) must be fully down and locked. Failure to secure wedges can allow attachment to come off and cause injury or death.

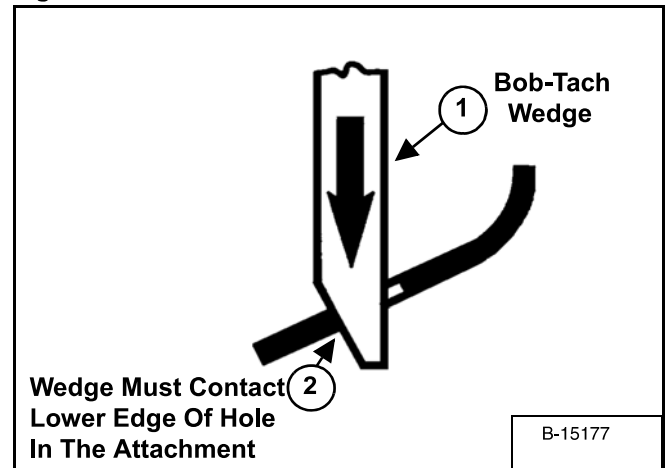
W-2102-0497

Figure 10-10-2



The wedges must extend through the holes in the attachment mounting frame (Item 1) [Figure 10-10-2].

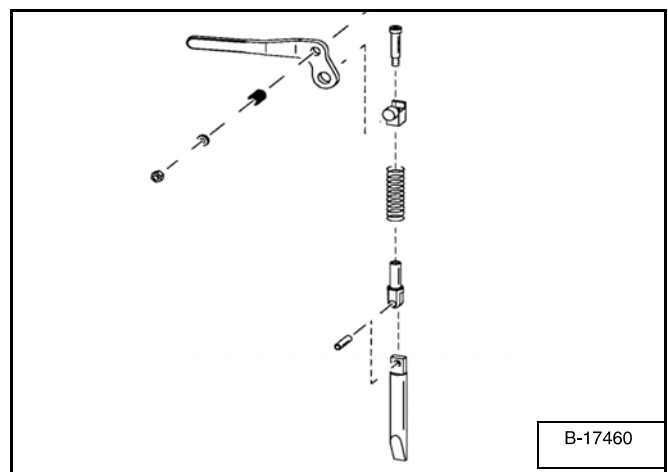
Figure 10-10-3



The spring loaded wedge (Item 1) must extend through the holes in the attachment mounting frame and must contact the lower edge of the hole in the attachment (Item 2) [Figure 10-10-3].

If the wedge does not contact the lower edge of the hole the attachment will be loose and can come off the Bob-Tach.

Figure 10-10-4



Inspect the mounting frame on the attachment and the Bob-Tach, linkages and wedges for excessive wear or damage [Figure 10-10-4]. Replace any parts that are damaged, bent, or missing. Keep all fasteners tight.

Look for cracked welds. Contact your dealer for repair or replacement parts.

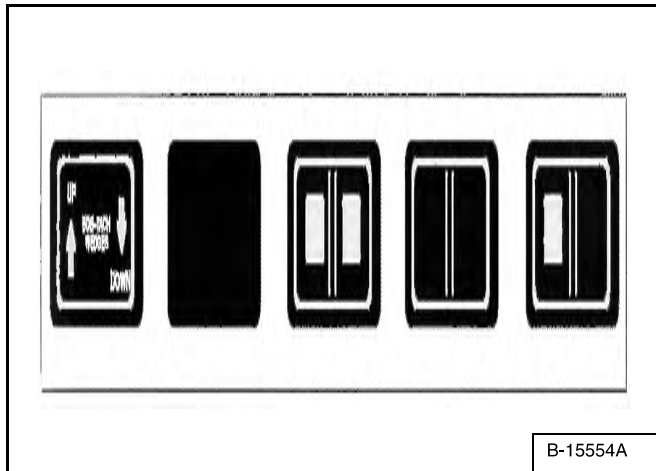
Lubricate the wedges. (See the correct loader Operation & Maintenance Manual for *LUBRICATION OF THE BOBCAT LOADER*).



## INSPECTION (CONT'D)

### Power Bob-Tach Inspection

Figure 10-10-5



Push and Hold the BOB-TACH “WEDGES UP” switch until wedges are fully raised. Push and Hold the BOB-TACH “WEDGES DOWN” switch [Figure 10-10-5] until the wedges are fully down. The wedges must move freely.

Figure 10-10-6

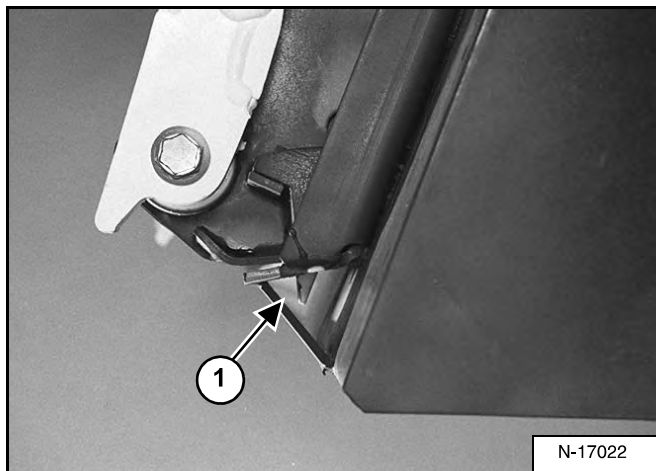
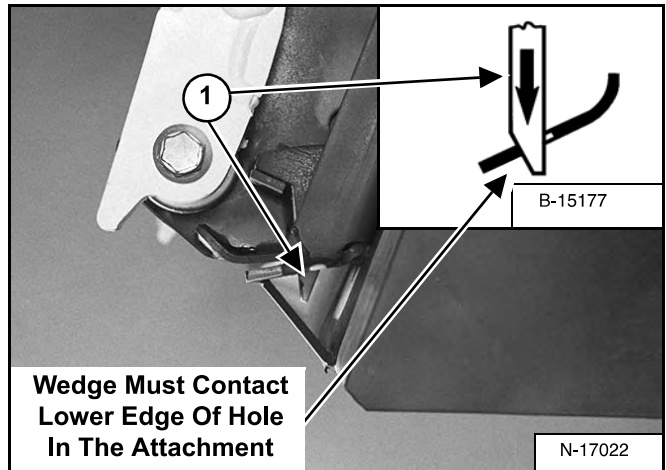


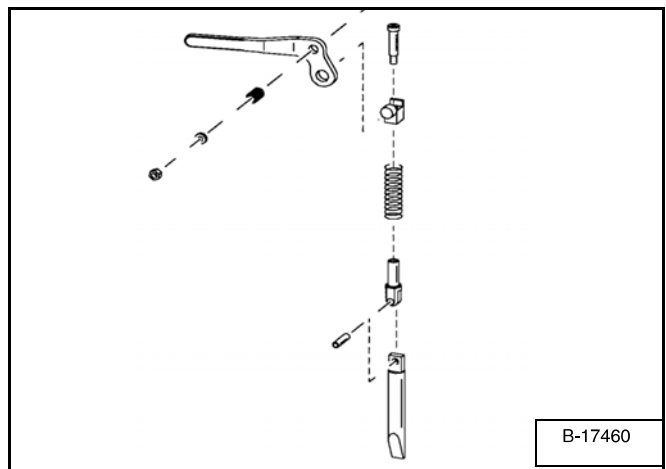
Figure 10-10-7



The spring loaded wedge (Item 1) [Figure 10-10-6] & [Figure 10-10-7] must extend through the holes in the attachment mounting frame and must contact the lower edge of the hole in the attachment (Item 2) [Figure 10-10-7].

If the wedge does not contact the lower edge of the hole, the attachment will be loose and can come off the Bob-Tach.

Figure 10-10-8



Inspect the mounting frame on the attachment and the Bob-Tach, linkages and wedges for excessive wear or damage [Figure 10-10-8]. Replace any parts including decals and levers that are damaged, bent, or missing. Keep all fasteners tight. Inspect the hoses and fittings for leaks.

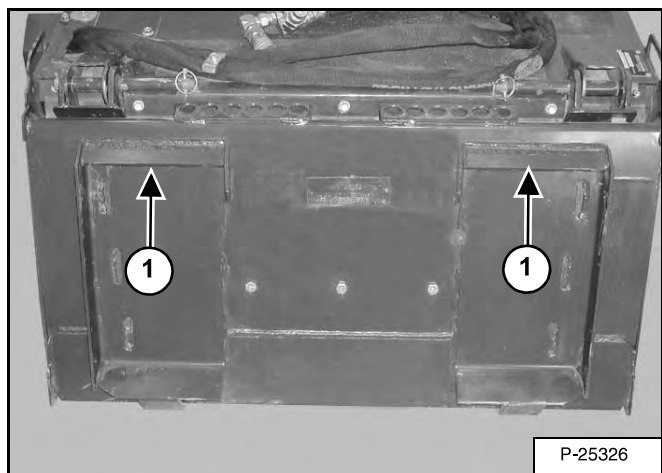
Look for cracked welds. Contact your dealer for repair or replacement parts.

Lubricate the wedges (see the correct Loader Operation & Maintenance Manual for LUBRICATION OF THE BOBCAT LOADER).

## INSPECTION (CONT'D)

### Sweeper Inspection

Figure 10-10-9



Inspect the sweeper mounting flange (Item 1) [Figure 10-10-9] and all welds on the sweeper mount for wear and damage each time the sweeper is removed from the loader.



**Bobcat®**

Dealer Copy -- Not for Resale